
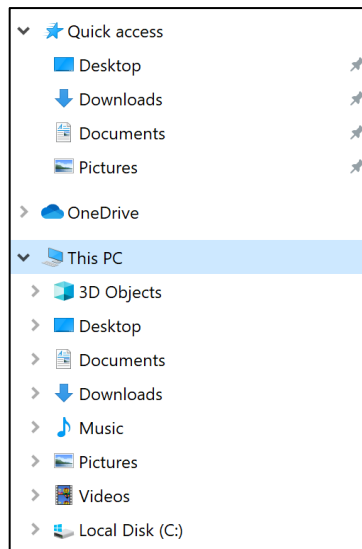


# Mapping Instructions – Windows 10

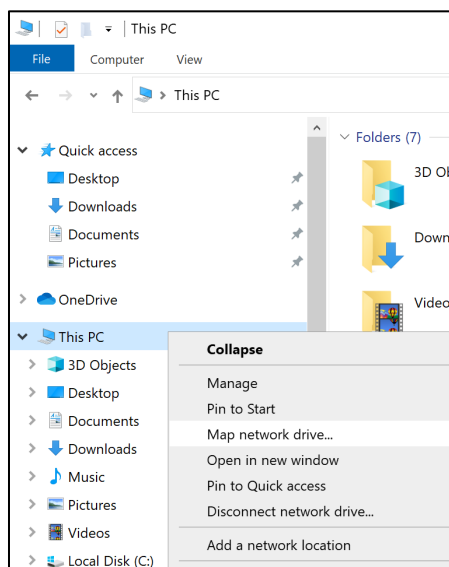
**Nota:** For this tutorial, it is necessary to have the Técnico's VPN installed. If you have not yet configured it, go to the Técnico's software page where you can find instructions.

Follow the steps below in order to access Técnico's available software.

1. Turn on Técnico's VPN.
2. Access File Explorer,  .
3. Find "This PC" like the following picture suggests.



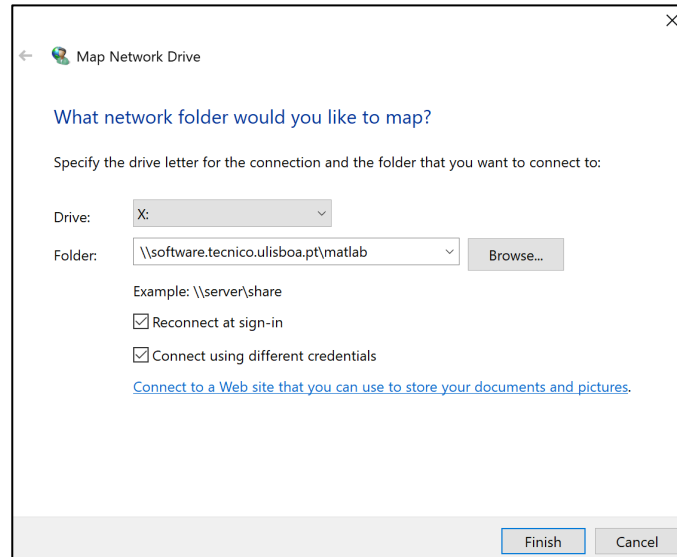
4. Click on "This PC" with the mouse's right button and choose the option that says "map network drive" as shown in the following figure.



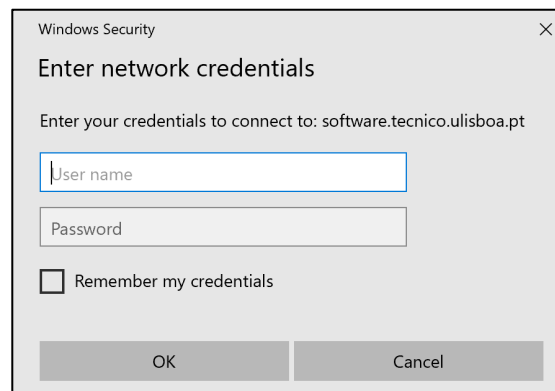
5. Write the following in the “Folder” field:

**\\software.tecnico.ulisboa.pt\DESIRED\_SOFTWARE**

As an example, we will be mapping the MATLAB’s folder. Be sure to have the option “Connect using different credentials” checked as shown in the following figure.



6. If step 5 has been successfully completed, you will be presented with an authentication window where you must fill in the fields with your Fénix’s credentials.



And that’s it! The mapping is completed.

